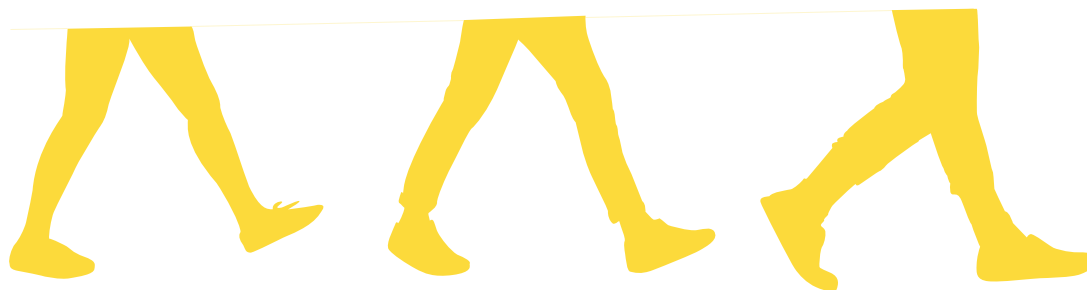


LA MARCHÉ

Compagnie 1+(1+1)



TECHNICAL RIDER

Things you should know

La marche is an **ambulatory** show going over the thematic of walking, its importance and origins, research going over the anthropology of walking.

Duration of the show : **20 minutes**

Ideal distance for the show : **350 meters**

Minimal distance for the show : **250 meters**

Members of the company

3 acrobats

1 technical director

+ occasionally 1 companies artistic director affiliate

Production schedule and personnel required

The company will need a production assistant familiar with the location where the show is performed, https://drive.google.com/drive/folders/1B9kKyEeprvk7_iPcLt_AmfzxneH2-p6s ideally that can speak either english or french.

- The company requires time to adapt the show : two days prior or three if the time zone difference is superior to 10h from the last location of the show
- A place (indoor or outdoor) to warm-up with ceilings of 18ft and with gymnastic mats
- An hour prior to the performance must be dedicated for the warm-up of the artists
- Ideal time between performance : 2 hours
- Minimum time between performances : 1 hour and a half
- Maximum performances per day : 2
- Access to a washer and dryer

* This rider may not be modified without the prior consent of one of 1+(1+1) staff member.

* All changes must be included in an agreement with 1+(1+1) company representatives

Just a couple more things !

Performances

- Access to water (With our technical director or at drop points)
- Someone to manage the audience so that the show can pass
- The show cannot be performed after sunfall

Costs, fees

- Transportation, living accomodations and per-diem for 4-5 people
- Per diem for every day spent until the end of the contract (including the two days to adapt the show)
- the cost of printing and building all accessories necessary for the performance
- the check needs to be paid in full the day that the artists leave.

Accessories

- The production must have printed before arrival the files sent by **1+(1+1)**
- The files must be printed on coroplast black and white
- The printing house must be able to print size up to 24 in x 26 in

QUESTIONS ?

ask us anything !



cie1plus1@gmail.com